

Photos from the campaign :

Daily meteorological briefings, with great help from the ASECNA/DMN forecasters, at Niamey's Airport.



The instrumented F20 for the French SAFIRE, landing at Niamey's airport.

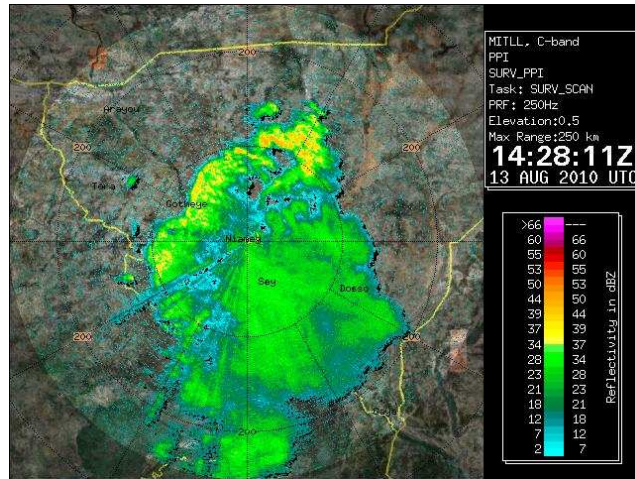




The NASA/GPM program sponsored the participation of the MIT RADAR to the campaign. The information from the MIT radar imagery was radio-transmitted to the aircraft team, to optimize the flight trajectory in real time.



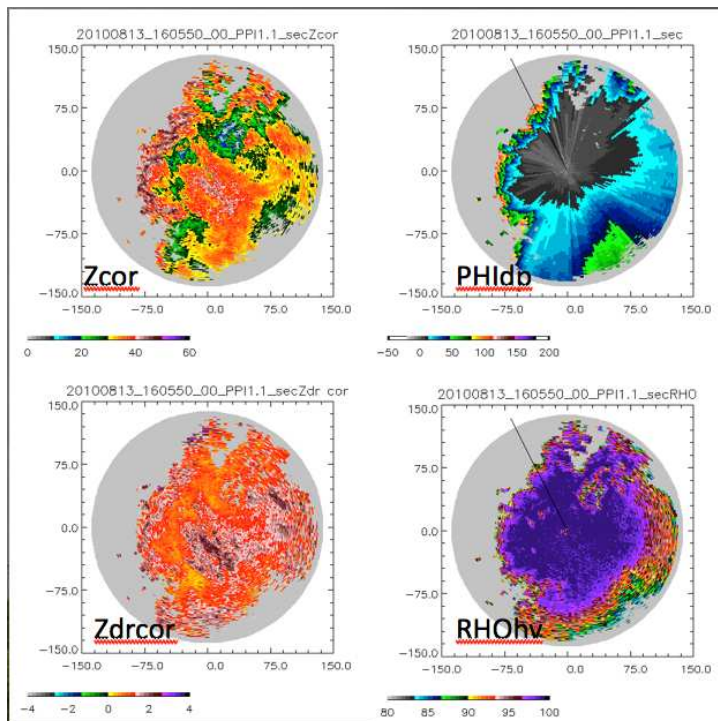
above : MIT radar installed at Niamey's Xport.



Radio contact from the MIT radar site to the airplane for the RT guidance of the aircraft team according to the radar reflectivity field (here during the 13th august flight).

Below : The Xport X-band polarimetric radar from IRD, installed on the ICRISAT site of Sadore, about 30 km south of Niamey.

Multi-variable data from the Xport radar (13th August flight) : attenuation corrected reflectivity and differential reflectivity, differential phase shift, differential correlation.





Visit of the MIT radar team to the Xport radar in Sadore



Visit of the MIT radar team to the Xport radar in Sadore