

# Image legend

- Images were generated using the Generic Mapping Tools software.
- Brightness temperature data can be downloaded at :  
<http://www.icare.univ-lille1.fr/archive/index.php?dir=SAPHIR/MT1SAPSL1A2.v1.06>
- UTH data can be downloaded at:  
[http://www.icare.univ-lille1.fr/archive/index.php?dir=SAPHIR/MT1\\_L2-UTH-SAPSL1A2.v1.00](http://www.icare.univ-lille1.fr/archive/index.php?dir=SAPHIR/MT1_L2-UTH-SAPSL1A2.v1.00)
- Images can be used freely but should be credited as:  
(c) T. Garot, LATMOS, 2014
- Questions can be addressed at: [thomas.garot@latmos.ipsl.fr](mailto:thomas.garot@latmos.ipsl.fr) or [helene.brogniez@latmos.ipsl.fr](mailto:helene.brogniez@latmos.ipsl.fr) or [nicolas.viltard@latmos.ipsl.fr](mailto:nicolas.viltard@latmos.ipsl.fr)

Instrument name and channel

SAPHIR - 183.31 GHz  $\pm$  11

Date in  
YYYYMMDD  
format

Segment  
number found  
in the file name  
(revolution  
number)

Date: 20140101

Orbit: 11481\_11482

STime: 20:42:32

ETime: 20:45:27

UTC time of  
data acquisition

Max: 279.47

Min: 118.55

Coldest and  
warmest Tb in  
the image  
Local time of  
data acquisition

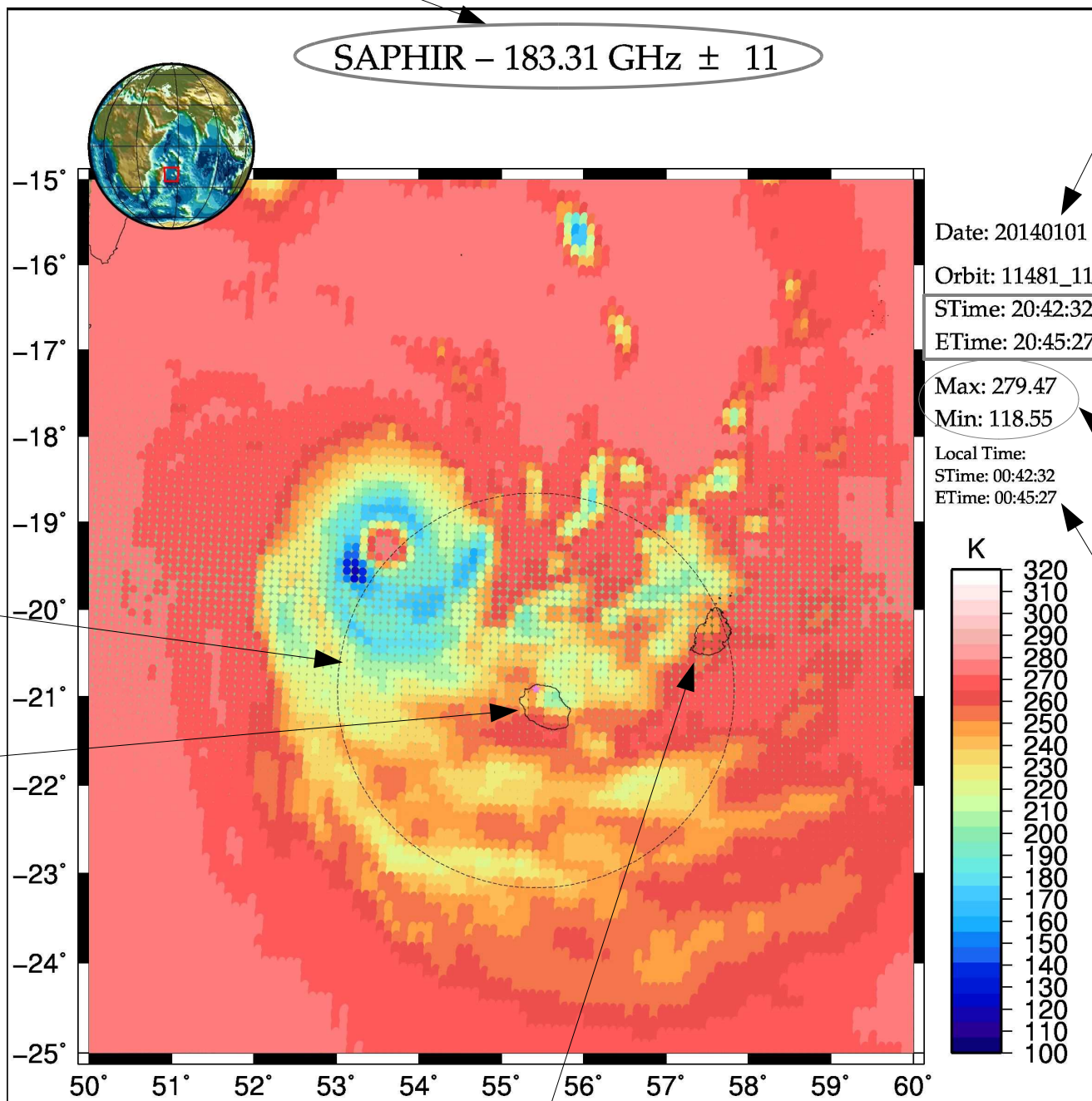
Local Time:

STime: 00:42:32

ETime: 00:45:27

250 km radius  
centered on  
the Météo-  
France radar  
located in  
Colorado hill.

La Réunion  
island



Mauritius island

Product name and channel used to compute it

**UTH - 183.31 GHz  $\pm$  2.8**

Date in  
YYYYMMDD  
format

Segment  
starting time  
found in the file  
name

Date: 20140101  
Orbit: 20:30:54

STime: 20:42:32  
ETime: 20:45:27

UTC time of  
data acquisition

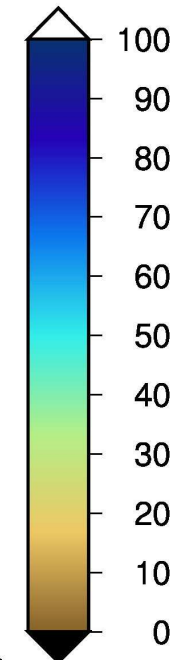
Min: 16.5724  
Max: 99.9690

Min and Max  
UTH in %

Mean: 54.2097  
Sigma: 57.1191

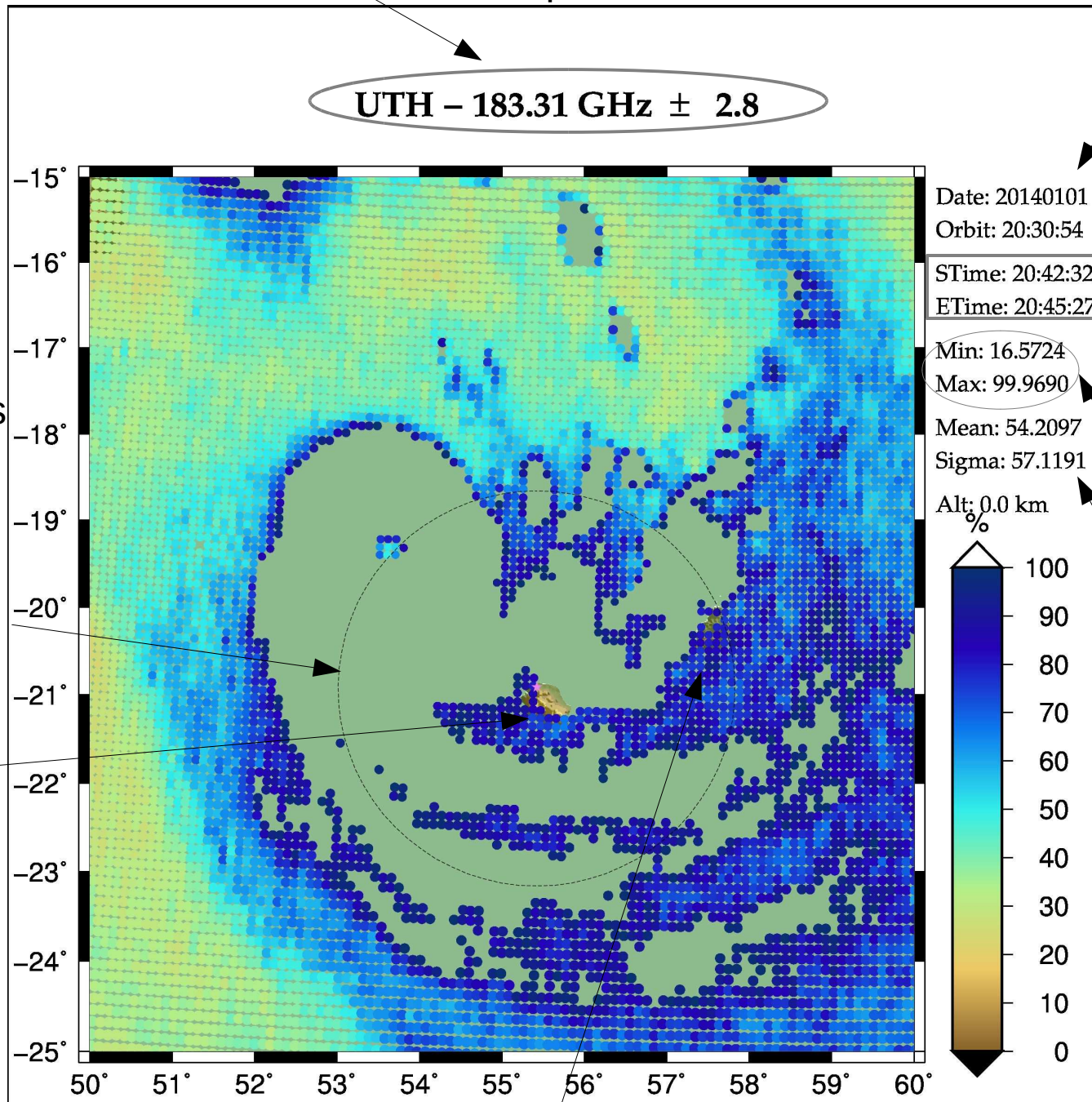
Average and std  
deviation of the  
data on the  
image

Alt: 0.0 km



250 km radius  
centered on the Météo-  
France radar  
located in  
Colorado hill.

La Réunion  
island



Mauritius island